



RESEARCH

Open Access

Varied sensitivity to therapy of HIV-1 strains in CD4⁺ lymphocyte sub-populations upon ART initiation

Edwin J Heeregrave¹, Mark J Geels², Elly Baan¹, Renee M van der Sluis¹, William A Paxton¹, Georgios Pollakis^{1*}

Abstract

Background: Although antiretroviral therapy (ART) has proven its success against HIV-1, the long lifespan of infected cells and viral latency prevent eradication. In this study we analyzed the sensitivity to ART of HIV-1 strains in naïve, central memory and effector memory CD4⁺ lymphocyte subsets.

Methods: From five patients cellular HIV-1 infection levels were quantified before and after initiation of therapy (2-5 weeks). Through sequencing the C2V3 region of the HIV-1 gp120 envelope, we studied the effect of short-term therapy on virus variants derived from naïve, central memory and effector memory CD4⁺ lymphocyte subsets.

Results: During short-term ART, HIV-1 infection levels declined in all lymphocyte subsets but not as much as RNA levels in serum. Virus diversity in the naïve and central memory lymphocyte populations remained unchanged, whilst diversity decreased in serum and the effector memory lymphocytes. ART differentially affected the virus populations co-circulating in one individual harboring a dual HIV-1 infection. Changes in V3 charge were found in all individuals after ART initiation with increases within the effector memory subset and decreases found in the naïve cell population.

Conclusions: During early ART virus diversity is affected mainly in the serum and effector memory cell compartments. Differential alterations in V3 charge were observed between effector memory and naïve populations. While certain cell populations can be targeted preferentially during early ART, some virus strains demonstrate varied sensitivity to therapy, as shown from studying two strains within a dual HIV-1 infected individual.

Background

Antiretroviral therapy (ART) has proven to be successful against human immunodeficiency virus type 1 (HIV-1) and results in undetectable plasma levels for many years. However, an increasing number of studies report on adverse events and toxicities [1,2]. Additional drawbacks to therapy are adherence and the considerable costs. In certain situations a more simplified antiretroviral regimen may be suitable, for instance as short-term use to prevent mother-to-child-transmission (MTCT), maintenance therapy after HAART or possibly as pre-exposure prophylaxis [3-7]. Despite the increased

likelihood of viremia and emergence of resistance, prophylactic and/or short-term therapeutic use largely bypasses these disadvantages and more treatment options remain available.

The CD4⁺ lymphocyte is the main target cell for HIV-1 infection with the various sub-populations infected to a different extent [8,9]. Naïve and memory lymphocyte subsets differ in body distribution, proliferative capacity and in expression levels of the main co-receptors for HIV-1, CCR5 and CXCR4 [10-13]. Despite these differences, all cellular subsets are productively infected and display a lack of viral compartmentalization among circulating cells in peripheral blood [9,14,15]. Under the influence of long-term ART most studies describe a lack of viral compartmentalization among HIV-1 infected CD4⁺ lymphocyte subsets [16-19]. Both central and transitional memory CD4⁺ lymphocytes are regarded as

* Correspondence: g.pollakis@amc.uva.nl

¹Laboratory of Experimental Virology, Department of Medical Microbiology, Center of Infection and Immunity Amsterdam (CINIMA), Academic Medical Center of the University of Amsterdam, The Netherlands
Full list of author information is available at the end of the article

cellular reservoirs for HIV-1 under therapy [20]. Baldanti and colleagues show that naïve and memory cell numbers and HIV-1 infection levels do not differ greatly from each other during therapy [21]. These studies focus mainly on long-term ART and do not describe the influence on the cell subset-specific quasi-species during early therapy intervention. We studied alterations to HIV-1 infection levels and viral diversity within specific cellular subsets after short-term ART.

Methods

Five chronically HIV-1 infected individuals, who visited frequently the outpatient clinic of the Academic Medical Center (AMC) of the University of Amsterdam, the Netherlands, participated in this study. These patients received various antiviral regimens (Table 1) and their characteristics have been described previously [9]. Serum and peripheral blood mononuclear cells (PBMC) were obtained and frozen according to standard protocols. Viral loads were determined with the Versant HIV-1 RNA Assay (bDNA; Bayer Diagnostics, Leverkusen, Germany). Determination of HIV-1 subtype was performed by phylogenetic analyses and by blasting the sequences using the Los Alamos database [22]. This study was approved by the Medical Ethical Committee of the AMC and informed consent was provided by all participants.

PBMC were thawed and FACS-sorted as published previously [9]. Cells were stained with various antibodies and three CD4⁺ lymphocyte subsets were sorted: naïve, CD57⁻ memory (or central memory) and CD57⁺ memory (or effector memory) CD4⁺ lymphocytes. All cell sorts were performed utilizing a modified FACS DIVA. Viral DNA from the cell subsets was isolated utilizing a silica-based method, which was also used for RNA isolation from serum [23]. Cellular HIV-1 infection levels were quantified using a semi-nested real-time PCR assay [9]. This assay targets the LTR segment of the virus genome where the second strand transfer takes place and quantifies only fully reverse transcribed HIV-1 genomic DNA and has high specificity for all major HIV-1 subtypes. We excluded HIV-1 quantifications of

the naïve subset of patient M16394 before therapy as well as the effector memory subsets before and after therapy and the memory subset after therapy of patient M12259, since either the input (cell number or virus copies) was too low or the outcome was unreliable. AMV-RT (Madison, WI, USA) was used for reverse transcription of the serum-derived RNA. The C2V3 region (HXB2 nucleotide positions 7032-7301) of the HIV-1 envelope gene was amplified using AmpliTaq DNA polymerase (PE Applied Biosystem, Foster City, CA, USA). The primers (100 ng/μl) for the first-round PCR were 5'-AATGTCAGCACAGTACAATG-3' and 3'-TCTCCTCCTCCAGGYCTGAA-5' and for the nested PCR 5'-CCAGTGGTATCAACTCAA-3' and 3'-ATTTCTAAGTCCCCTCCTGA-5'. PCR products were sequenced clonally using the TOPO II cloning system (Invitrogen, Paisley, UK). Eleven to twenty-three clones from each subset were sequenced bi-directionally using the BigDye Terminator Cycle Sequencing kit and analyzed with the ABI 377 automated sequencer (Applied Biosystems, Foster City, CA, USA). Quality of the sequences was analyzed using CodonCode Aligner version 1.5.1, after which the sequences were aligned with BioEdit and adjusted manually with respect to the gp120 open reading frame and according to reference sequences from the Los Alamos HIV sequence database [22]. Molecular evolutionary analyses were conducted using MEGA version 4 [24]. Tamura-Nei was used as distance parameter and inter-patient cross-contamination was ruled out. Statistical analyses were performed using the Mann-Whitney test.

Sequence data

The sequences described here were allocated the following Genbank nucleotide accession numbers: GQ389219, GQ389220, GQ389225, GQ389227 and GQ389228.

Results

Patient description and HIV-1 quantification in CD4⁺ lymphocyte subsets

We studied the effect of antiretroviral therapy on HIV-1 infection levels of naïve, central memory and effector

Table 1 Patient characteristics

Patient	Env subtype	therapy regimen	# days on ART	viral load (copies/ml)		CD4 count (cells/μl)	
				ART-	ART+	ART-	ART+
M11306	C	amprenavir	14	52,436	3,160	90	n.d. ^b
M12020	D	zidovudine	18	5,352	304	190	220
M12259	F	zidovudine	33	246,572	25,588	360	500
M13408	A	d4t, 3tc, rtv ^a	28	65,262	247	620	840
M16394	C	zidovudine	28	1,026	607	800	690

^ad4t - stavudine, 3tc - lamivudine, rtv - ritonavir

^b not determined

memory CD4⁺ lymphocyte populations and on the viral quasi-species present in these subsets, two to five weeks after initiation of ART. The five patients studied harbored various HIV-1 subtypes (A, C, D and F) and demonstrated a wide range of viral load values and CD4 counts (Table 1). Three out of five study subjects received an RT inhibitor (AZT), one a protease inhibitor (APV) and one received a three drug regimen (d4T/3TC/RTV). Plasma viral load declined in four individuals by 1 to 2.4 log and one subject (M16394) experienced only a small plasma load decline (Figure 1A). This patient already had a low viral load prior to therapy (1,026 copies/ml). Additionally, this patient had a high CD4 count at time of therapy initiation (800 cells/ μ l), which did not rise following therapy. In three of the four patients with complete data sets intracellular HIV-1 infection levels decayed by comparable levels for all cell subsets analyzed, by up to 1.1 log (Figure 1B). One exception was the effector memory population of subject M13408, the individual receiving the triple regimen, where infection levels significantly increased 6.5-fold. The drops in plasma viral loads would suggest that resistance has not occurred in the patients tested during the short time period of study.

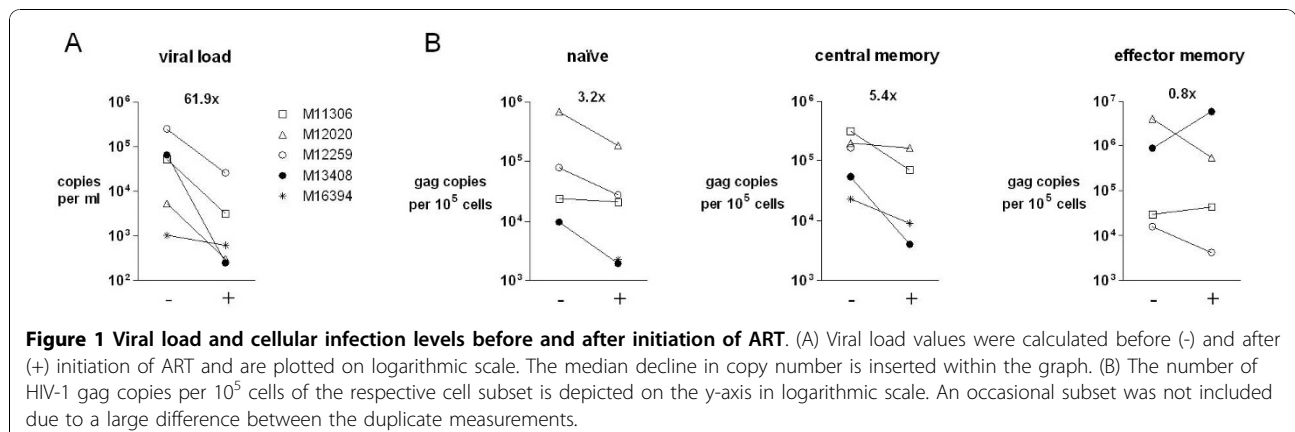
Influence of therapy on HIV-1 quasi-species in CD4⁺ lymphocyte subsets

Our goal was to determine how therapy affected the virus variants within naïve, central memory and effector memory CD4⁺ T cell subsets during the initial phase of therapy. Before therapy initiation, phylogenetic analysis of the C2V3 region of HIV-1 gp120 envelope did not demonstrate compartmentalization of the virus quasi-species within serum or CD4⁺ T cell subsets (Figure 2A). Only effector memory-derived sequences from M12020 clustered. After initiation of therapy loss of diversity was observed predominantly in serum, but also within the effector memory subset (Figure 2B). Naïve-

and central memory-derived virus showed modest changes in diversity. The loss of diversity was highly significant in serum ($p = 0.02$ for subject M12259 and $p < 0.0001$ for all other patients; Figure 3). No diversity loss was observed in the naïve or central memory compartments.

To measure genetic evolution of the viral quasi-species, pair-wise distances were calculated between the virus populations before and after start of therapy. In serum, divergence of the viral quasi-species was observed in three patients (indicated by an asterisk; Figure 3). This indicated selection of serum variants due to therapy introduction. Viral divergence was absent in all cell subsets, with the exception of the effector memory subset in subject M12020. The absence of changes in viral diversity and divergence within naïve and central memory subsets as opposed to effector memory cells and serum indicates that during early therapy the plasma and effector memory cell compartments are more susceptible to the effects of the drugs.

To investigate the relatedness of virus strains among the cellular fractions the genetic distances between HIV-1 sequences derived from the various cellular fractions were calculated. Four out of five individuals demonstrated comparable distances before and after start of therapy ranging from 2.4% to 7.2% (Figure 4). After therapy initiation no change in distances were observed and were found to be similar within each of the cellular subsets. Subject M12020 was interesting since inter-subset distances before therapy were not only higher than those from all other individuals, but also higher than values observed following therapy (Figure 4). This individual was found to be infected with two different subtype D virus strains (strain I and II) as shown by phylogenetic analysis (Figure 2A). In addition, the analysis of virus sequences with DNAsp software indicated that up to 11 possible recombination breakpoints could be detected suggesting that these two



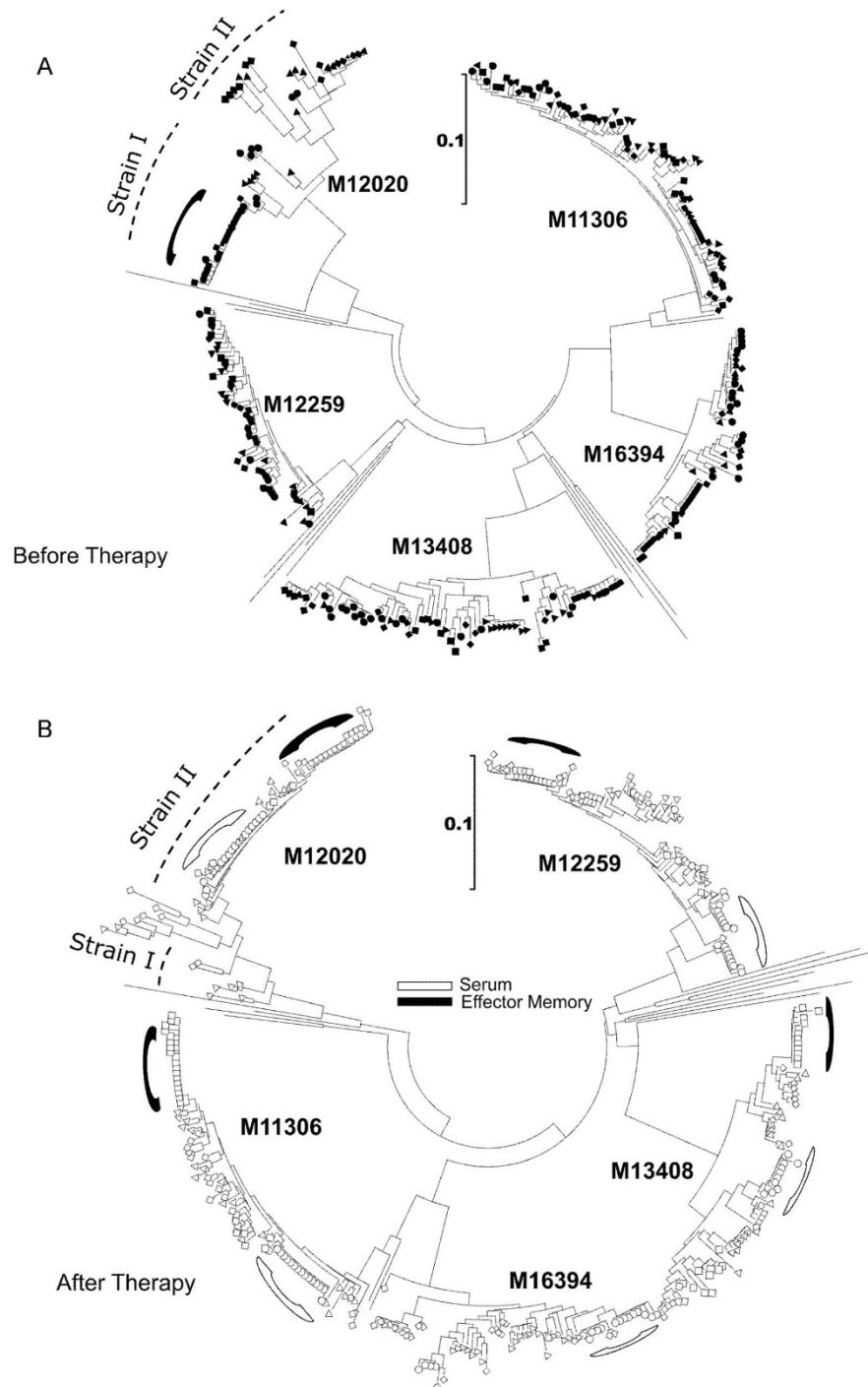
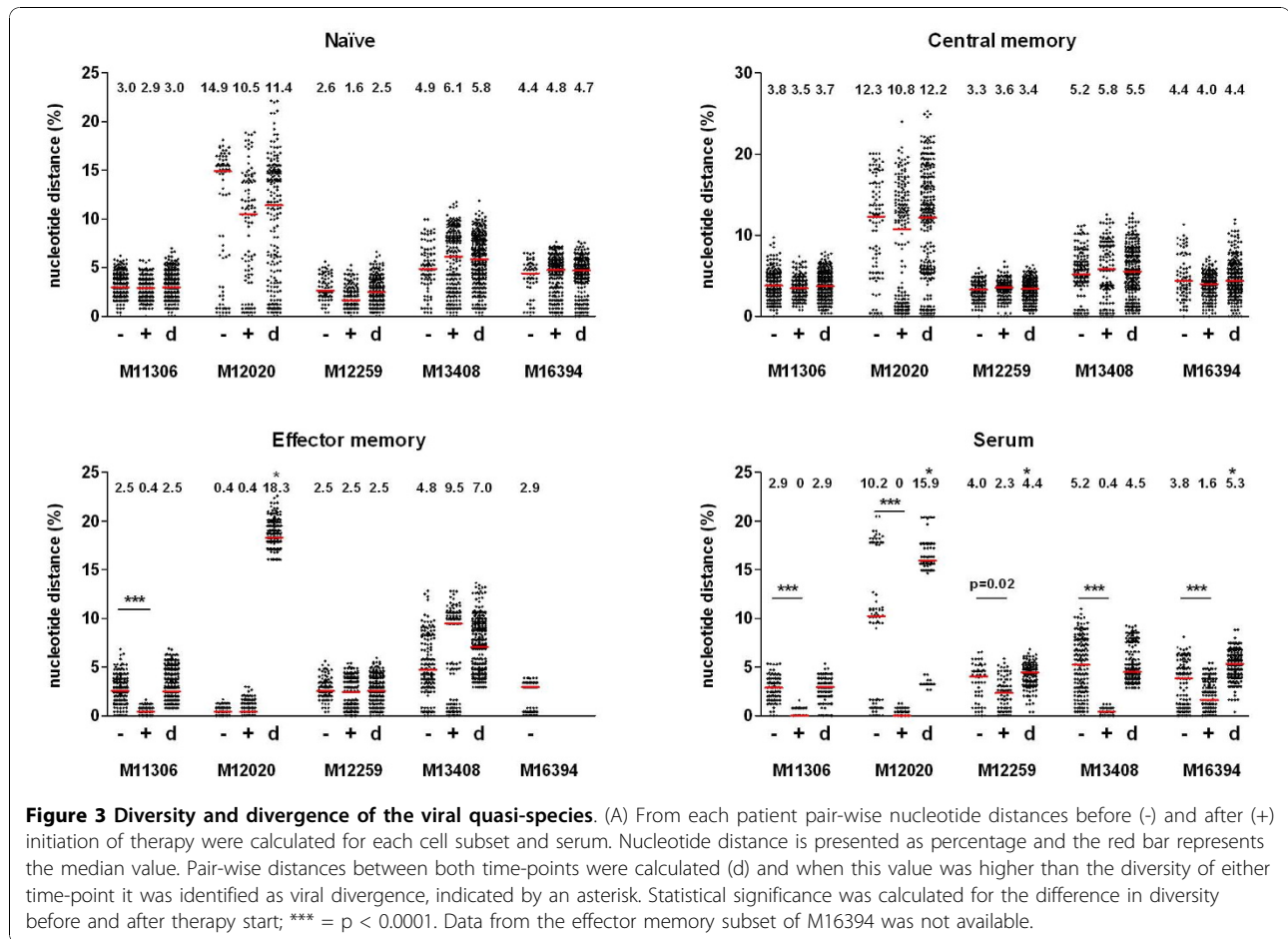


Figure 2 Neighbor-joining phylogenetic analysis of the gp120 virus sequences. The Kimura-2 parameter and 100 replicates were used to calculate nucleotide distances and sequences from the Los Alamos HIV-1 database were used as reference strains. Circles indicate sequences from serum, diamonds from naïve CD4⁺ T cells, triangle from central memory and squares from effector memory cells. (A) Phylogeny of the strains isolated before initiation of therapy (B) Phylogeny of the strains isolated after therapy initiation. The black curved lines indicate strains from the effector memory population and the white curved lines indicate strains from serum. The dotted line indicates the two virus strains co-circulating in subject M12020.



virus strains were co-circulating within this individual for some time (data not shown). Before therapy, strain I was dominant in the effector cell population, while the other cell subsets harbored strain II. Both strains were present in serum. After therapy start, strain I disappeared from the effector memory subset but remained in some central memory cells (Figure 2B). The replenishment of this cell subset by a different virus strain correlated with viral divergence (Figure 3). Inter-subset virus distances approached values observed for the other patients harboring mono-infections, demonstrating that although some cell populations may be more sensitive to the effects of antiretroviral therapy, differences in sensitivity amongst virus strains also exists. These data indicate that the occurrence of dual HIV-1 infection could be an additional hurdle for therapy to succeed.

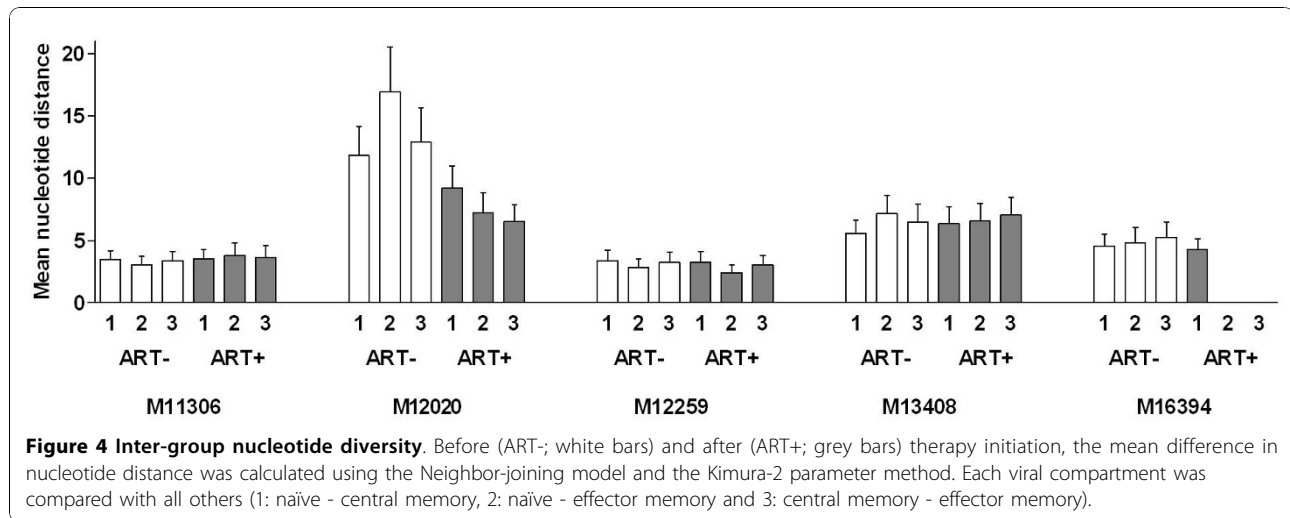
Influence of therapy on V3 charge

Previous observations by our group and others have shown that V3 charge influences co-receptor usage [25,26]. Since CD4⁺ lymphocyte sub-populations differ in co-receptor expression levels, we analyzed whether

therapy initiation affected the V3 charge of the virus quasi-species in serum and lymphocyte subsets due to the variant expression profile. We therefore compared the V3 charge from all sequences found in the cell subsets before and after start of therapy. Sequences from all five patients were grouped together and we observed a clear increase in V3 charge within the effector memory subset in three out of four subjects (Figure 5; $p < 0.0001$). Within the central memory subset the V3 charge did not change whilst alterations in serum varied per patient (Figure 5; no significance). Within the naïve subset the V3 charge decreased systematically in all patients ($p = 0.05$), indicating that characteristics such as co-receptor usage may be involved in viral selection following initiation of therapy.

Discussion

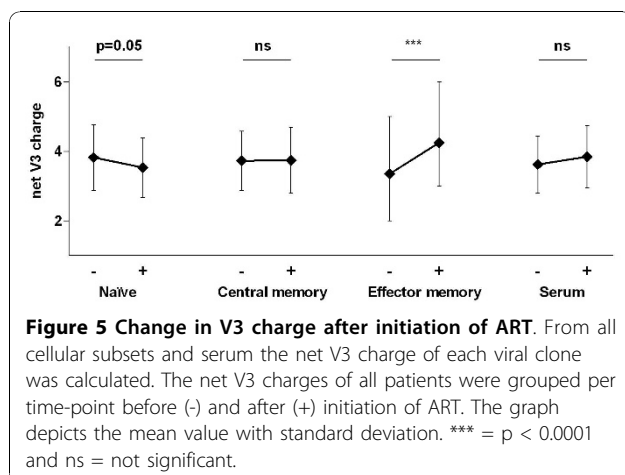
In our study we observed comparable viral decay within all CD4⁺ lymphocyte sub-populations in the peripheral blood, except for one effector memory subset, confirming our previous observation that all CD4⁺ lymphocyte subsets are productively infected with HIV-1 [9]. The results also confirm findings from other studies



demonstrating comparable decay of productively infected cells in peripheral blood [21,27]. A report on preferential HIV-1 inhibition during AZT treatment in activated cells over slowly dividing cells *in vitro*, may indicate that the vast majority of virus in the circulation comes from activated cells [28]. Although naïve and central memory lymphocyte subsets contain more long-lived resting cells than the effector memory subset and outnumber this subset, no difference in viral decay was observed.

Two to five weeks after initiation of ART represents the start of the second phase of viral decay, with loss of long-lived infected cells [29]. Here we study the early effects of therapy on the virus populations found in the three different lymphocyte subsets studied and compare to the changes observed in the plasma. It may be too early to detect differences in virus composition in cell populations with a slower decay rate as may be seen at a later stage when therapy is completely suppressing virus replication. In addition, the accumulation of

replication-incompetent proviral DNA in these cell subsets together with the high rate of virus production by effector memory cells may in part influence the decreased viral diversity within effector memory cells, whilst no effect was observed for the other cell subsets during the short period of the study. M13408 was the only patient who received a triple therapy regimen and who surprisingly demonstrated an increase in effector memory infection levels. Perhaps these cells possess high P-glycoprotein efflux activity decreasing intracellular antiviral drug concentrations [30]. Although blood CD4⁺ lymphocyte levels only represent a minor fraction of the total body lymphocyte population, memory subsets in blood versus gut and lymphoid tissue counterparts are infected to the same extent [20,31], thereby indicating that studying HIV-1 infection in blood is a good representation of events that occur in other tissues. With respect to our approach of cloning prior to sequencing we argue that direct sequencing would circumvent a possible cloning bias, although neither method is more skewed than the other and both provide for a similar measure of diversity [32]. Furthermore, sequence bias can occur through preferential PCR amplification and since we do not identify this in all fractions studied or for all time-points analyzed from the same patients we feel this can be ruled out. We are confident that when we identify a restricted sequence this is representative of the viral quasi-species present within that specific fraction. In all likelihood low diversity can reflect either low infectivity or over representation of a fast replicating strain.



The more pronounced changes observed in diversity of cell-free over cell-associated virus can be explained by the difference in half-life, which can severely reduce serum copy numbers [29]. Although virus diversity in serum decreased after initiation of therapy the pair-wise

distances calculated between time-points before and during therapy increased, indicating different genetic characteristics of the virus after introduction of therapy. Virus may be produced by other cell types or derived from compartments less accessible to antiretroviral drugs [19,33-35]. This is in agreement with studies demonstrating that rebound virus is distinct from variants present before start of therapy [36,37]. The absence of divergence in the cell subsets (apart from with patient M12020) can be explained by a moderate drop in infection levels and smaller changes in diversity. In M12020 the compartmentalization of effector memory-derived virus pre-therapy indicates that in the case of dual HIV-1 infection one strain preferentially infects a specific CD4⁺ lymphocyte subset. We have previously observed in dual HIV-1 infection that one strain replicates preferentially within different cell types when compared with another strain indicating that the host cell environment influences viral replication [9,38]. The shift in balance between strains I and II is likely caused by therapy, although differences in host immune pressure, virus fitness as well as high turnover rates of the specific cell subset may also play a role. The complete and specific infection of effector memory cells by strain I and the rapid replenishment with a different virus strain indicate that this cell subset may easily facilitate infection by different variants. Although strain I was not detected in serum during therapy, its presence in long-lived central memory cells at that time-point ensures persistence of both variants. This increases the chances of recombination and therapy resistance, raising questions as to the efficacy of antiretroviral therapy in dual-infected individuals [39]. This is in line with the more resistant phenotype of HIV-2 over HIV-1 in dual-infected persons [40].

The pronounced increase in the gp120 V3 charge in effector memory cells in three out of four patients reflects increased sensitivity to therapy of virus within this cell subset. It has been speculated that such changes can influence co-receptor usage, including a possible switch towards CXCR4 usage [25,26,41,42]. Four weeks of therapy restores CCR5 expression levels, which are increased during HIV-1 infection, while CXCR4 expression levels demonstrate a modest change [43].

Conclusions

In conclusion, ART resulted in a comparable decay of HIV-1 infection levels in naïve and central memory subsets with minor to no changes in the viral quasi-species present. HIV-1 copy numbers in the effector memory subset not always decreased and the virus in this cell subset and in serum appeared to be more sensitive to therapy. We also observed variant sensitivity among virus strains in a dual-infected individual. These results

provide better insights into the viral dynamics within CD4⁺ lymphocyte subsets during early therapy.

Abbreviations

HIV-1: human immunodeficiency virus type 1; ART: antiretroviral therapy; PBMC: peripheral blood mononuclear cells.

Acknowledgements

The authors would like to thank Jason M Brenchley, Brenna Hill, David Ambrozak, Daniel C Douek and Richard A Koup, Vaccine Research Center, National Institutes of Health, Bethesda, Maryland, USA for assistance with the cell sorts. This work was supported financially by NWO-WOTRO (grant 01.53.2004.025; EJH, WAP and GP) and by Dutch AIDSfonds (grant 6002; MJG and EB).

Author details

¹Laboratory of Experimental Virology, Department of Medical Microbiology, Center of Infection and Immunity Amsterdam (CINIMA), Academic Medical Center of the University of Amsterdam, The Netherlands. ²Mark J Geels is currently employed at Nobilon International BV, Exportstraat 39B, P.O. Box 320, 5830 AH Boxmeer, The Netherlands.

Authors' contributions

EJH, MJG, EB and RMvdS performed the experiments; EJH wrote the manuscript and performed statistical analyses; GP and WAP supervised and reviewed the manuscript. All authors read and approved the final manuscript.

Competing interests

The authors declare that they have no competing interests.

Received: 19 August 2010 Accepted: 6 December 2010

Published: 6 December 2010

References

1. Mallon PW: Pathogenesis of lipodystrophy and lipid abnormalities in patients taking antiretroviral therapy. *AIDS Rev* 2007, **9**:3-15.
2. Anuurad E, Semrad A, Berglund L: Human immunodeficiency virus and highly active antiretroviral therapy-associated metabolic disorders and risk factors for cardiovascular disease. *Metab Syndr Relat Disord* 2009, **7**:401-410.
3. Bierman WF, van Agtmael MA, Nijhuis M, Danner SA, Boucher CA: HIV monotherapy with ritonavir-boosted protease inhibitors: a systematic review. *Aids* 2009, **23**:279-291.
4. Volmink J, Siegfried NL, Van der Merwe L, Brocklehurst P: Antiretrovirals for reducing the risk of mother-to-child transmission of HIV infection. *Cochrane Database Syst Rev* 2007, CD003510.
5. Denton PW, Estes JD, Sun Z, Othieno FA, Wei BL, Wege AK, Powell DA, Payne D, Haase AT, Garcia JV: Antiretroviral pre-exposure prophylaxis prevents vaginal transmission of HIV-1 in humanized BLT mice. *PLoS Med* 2008, **5**:e16.
6. Connor EM, Sperling RS, Gelber R, Kiselev P, Scott G, O'Sullivan MJ, VanDyke R, Bey M, Shearer W, Jacobson RL: Reduction of maternal-infant transmission of human immunodeficiency virus type 1 with zidovudine treatment. Pediatric AIDS Clinical Trials Group Protocol 076 Study Group. *N Engl J Med* 1994, **331**:1173-1180.
7. The Centers for Disease Control and Prevention website. [http://www.cdc.gov/hiv/prep/resources/qa].
8. Brenchley JM, Hill BJ, Ambrozak DR, Price DA, Guenaga FJ, Casazza JP, Kuruppu J, Yazdani J, Migueles SA, Connors M, Roederer M, Douek DC, Koup RA: T-cell subsets that harbor human immunodeficiency virus (HIV) in vivo: implications for HIV pathogenesis. *J Virol* 2004, **78**:1160-1168.
9. Heeregrave EJ, Geels MJ, Brenchley JM, Baan E, Ambrozak DR, van der Sluis RM, Bannemeer R, Douek DC, Goudsmit J, Pollakis G, Koup RA, Paxton WA: Lack of in vivo compartmentalization among HIV-1 infected naive and memory CD4⁺ T cell subsets. *Virology* 2009, **393**:24-32.
10. Bleul CC, Wu L, Hoxie JA, Springer TA, Mackay CR: The HIV coreceptors CXCR4 and CCR5 are differentially expressed and regulated on human T lymphocytes. *Proc Natl Acad Sci USA* 1997, **94**:1925-1930.

11. Groot F, van Capel TM, Schuitemaker J, Berkhout B, de Jong EC: **Differential susceptibility of naive, central memory and effector memory T cells to dendritic cell-mediated HIV-1 transmission.** *Retrovirology* 2006, **3**:52.
12. Lanzavecchia A, Sallusto F: **Understanding the generation and function of memory T cell subsets.** *Curr Opin Immunol* 2005, **17**:326-332.
13. Picker LJ, Butcher EC: **Physiological and molecular mechanisms of lymphocyte homing.** *Annu Rev Immunol* 1992, **10**:561-591.
14. Eckstein DA, Penn ML, Korin YD, Scripture-Adams DD, Zack JA, Kreisberg JF, Roederer M, Sherman MP, Chin PS, Goldsmith MA: **HIV-1 actively replicates in naive CD4(+) T cells residing within human lymphoid tissues.** *Immunity* 2001, **15**:671-682.
15. Kinter A, Moorthy A, Jackson R, Fauci AS: **Productive HIV infection of resting CD4+ T cells: role of lymphoid tissue microenvironment and effect of immunomodulating agents.** *AIDS Res Hum Retroviruses* 2003, **19**:847-856.
16. Delobel P, Sandres-Saune K, Cazabat M, L'Faqihi FE, Aquilina C, Obadia M, Pasquier C, Marchou B, Massip P, Izopet J: **Persistence of distinct HIV-1 populations in blood monocytes and naive and memory CD4 T cells during prolonged suppressive HAART.** *Aids* 2005, **19**:1739-1750.
17. Ostrowski MA, Chun TW, Justement SJ, Motola I, Spinelli MA, Adelsberger J, Ehler LA, Mizell SB, Hallahan CW, Fauci AS: **Both memory and CD45RA +/CD62L+ naive CD4(+) T cells are infected in human immunodeficiency virus type 1-infected individuals.** *J Virol* 1999, **73**:6430-6435.
18. Chun TW, Nickle DC, Justement JS, Large D, Semerjian A, Curlin ME, O'Shea MA, Hallahan CW, Daucher M, Ward DJ, Moir S, Mullins JI, Kovacs C, Fauci AS: **HIV-infected individuals receiving effective antiviral therapy for extended periods of time continually replenish their viral reservoir.** *J Clin Invest* 2005, **115**:3250-3255.
19. Brennan TP, Woods JO, Sedaghat AR, Siliciano JD, Siliciano RF, Wilke CO: **Analysis of human immunodeficiency virus type 1 viremia and provirus in resting CD4+ T cells reveals a novel source of residual viremia in patients on antiretroviral therapy.** *J Virol* 2009, **83**:8470-8481.
20. Chomont N, El-Far M, Ancuta P, Trautmann L, Procopio FA, Yassine-Diab B, Boucher G, Boulassel MR, Ghattas G, Brechley JM, Schacker TW, Hill BJ, Douek DC, Routy JP, Haddad EK, Sekaly RP: **HIV reservoir size and persistence are driven by T cell survival and homeostatic proliferation.** *Nat Med* 2009, **15**:893-900.
21. Baldanti F, Paolucci S, Gulminetti R, Maserati R, Migliorino G, Pan A, Maggiolo F, Comolli G, Chiesa A, Gerna G: **Higher levels of HIV DNA in memory and naive CD4(+) T cell subsets of viremic compared to non-viremic patients after 18 and 24 months of HAART.** *Antiviral Res* 2001, **50**:197-206.
22. **The Los Alamos database website.** [http://www.hiv.lanl.gov].
23. Boom R, Sol CJ, Salimans MM, Jansen CL, Wertheim-van Dillen PM, van der Noordaa J: **Rapid and simple method for purification of nucleic acids.** *J Clin Microbiol* 1990, **28**:495-503.
24. Tamura K, Dudley J, Nei M, Kumar S: **MEGA4: Molecular Evolutionary Genetics Analysis (MEGA) software version 4.0.** *Mol Biol Evol* 2007, **24**:1596-1599.
25. Nabatov AA, Pollakis G, Linnemann T, Kliphuis A, Chalaby MI, Paxton WA: **Intrapatient alterations in the human immunodeficiency virus type 1 gp120 V1V2 and V3 regions differentially modulate coreceptor usage, virus inhibition by CC/CXC chemokines, soluble CD4, and the b12 and 2G12 monoclonal antibodies.** *J Virol* 2004, **78**:524-530.
26. Schols D, Este JA, Cabrera C, De Clercq E: **T-cell-line-tropic human immunodeficiency virus type 1 that is made resistant to stromal cell-derived factor 1alpha contains mutations in the envelope gp120 but does not show a switch in coreceptor use.** *J Virol* 1998, **72**:4032-4037.
27. Ince WL, Harrington PR, Schnell GL, Patel-Chhabra M, Burch CL, Menezes P, Price RW, Eron JJ Jr, Swanstrom RI: **Major coexisting human immunodeficiency virus type 1 env gene subpopulations in the peripheral blood are produced by cells with similar turnover rates and show little evidence of genetic compartmentalization.** *J Virol* 2009, **83**:4068-4080.
28. Gondois-Rey F, Biancotto A, Fernandez MA, Bettendorffer L, Blazkova J, Trejbalova K, Pion M, Hirsch I: **R5 variants of human immunodeficiency virus type 1 preferentially infect CD62L- CD4+ T cells and are potentially resistant to nucleoside reverse transcriptase inhibitors.** *J Virol* 2006, **80**:854-865.
29. Perelson AS, Essunger P, Cao Y, Vesanen M, Hurley A, Saksela K, Markowitz M, Ho DD: **Decay characteristics of HIV-1-infected compartments during combination therapy.** *Nature* 1997, **387**:188-191.
30. Valentin A, Morrow M, Poirier RH, Aleman K, Little R, Yarchoan R, Pavlakis GN: **Identification of a potential pharmacological sanctuary for HIV type 1 in a fraction of CD4(+) primary cells.** *AIDS Res Hum Retroviruses* 2010, **26**:79-88.
31. Westermann J, Pabst R: **Distribution of lymphocyte subsets and natural killer cells in the human body.** *Clin Invest* 1992, **70**:539-544.
32. Jordan MR, Kearney M, Palmer S, Shao W, Maldarelli F, Coakley EP, Chappay C, Wanke C, Coffin JM: **Comparison of standard PCR/cloning to single genome sequencing for analysis of HIV-1 populations.** *J Virol Methods* 2010, **168**:114-120.
33. Chun TW, Davey RT Jr, Ostrowski M, Shawn JJ, Engel D, Mullins JI, Fauci AS: **Relationship between pre-existing viral reservoirs and the re-emergence of plasma viremia after discontinuation of highly active anti-retroviral therapy.** *Nat Med* 2000, **6**:757-761.
34. Sahu GK, Paar D, Frost SD, Smith MM, Weaver S, Cloyd MW: **Low-level plasma HIVs in patients on prolonged suppressive highly active antiretroviral therapy are produced mostly by cells other than CD4 T-cells.** *J Med Virol* 2009, **81**:9-15.
35. Geeraert L, Kraus G, Pomerantz RJ: **Hide-and-seek: the challenge of viral persistence in HIV-1 infection.** *Annu Rev Med* 2008, **59**:487-501.
36. Imamichi H, Crandall KA, Natarajan V, Jiang MK, Dewar RL, Berg S, Gaddam A, Bosche M, Metcalf JA, Davey RT Jr, Lane HC: **Human immunodeficiency virus type 1 quasi species that rebound after discontinuation of highly active antiretroviral therapy are similar to the viral quasi species present before initiation of therapy.** *J Infect Dis* 2001, **183**:36-50.
37. Joos B, Fischer M, Kuster H, Pillai SK, Wong JK, Boni J, Hirschel B, Weber R, Trkola A, Gunthard HF: **HIV rebounds from latently infected cells, rather than from continuing low-level replication.** *Proc Natl Acad Sci USA* 2008, **105**:16725-16730.
38. van Opijnen T, Boerlijst MC, Berkhout B: **Effects of random mutations in the human immunodeficiency virus type 1 transcriptional promoter on viral fitness in different host cell environments.** *J Virol* 2006, **80**:6678-6685.
39. van der Kuyl AC, Cornelissen M: **Identifying HIV-1 dual infections.** *Retrovirology* 2007, **4**:67.
40. Schutten M, van der Ende ME, Osterhaus AD: **Antiretroviral therapy in patients with dual infection with human immunodeficiency virus types 1 and 2.** *N Engl J Med* 2000, **342**:1758-1760.
41. Scarlatti G, Tresoldi E, Bjorndal A, Fredriksson R, Colognesi C, Deng HK, Malnati MS, Plebani A, Siccardi AG, Littman DR, Fenyo EM, Lusso P: **In vivo evolution of HIV-1 co-receptor usage and sensitivity to chemokine-mediated suppression.** *Nat Med* 1997, **3**:1259-1265.
42. De Jong JJ, de Ronde A, Keulen W, Tersmette M, Goudsmit J: **Minimal requirements for the human immunodeficiency virus type 1 V3 domain to support the syncytium-inducing phenotype: analysis by single amino acid substitution.** *J Virol* 1992, **66**:6777-6780.
43. Nicholson JK, Browning SW, Hengel RL, Lew E, Gallagher LE, Rimland D, McDougal JS: **CCR5 and CXCR4 expression on memory and naive T cells in HIV-1 infection and response to highly active antiretroviral therapy.** *J Acquir Immune Defic Syndr* 2001, **27**:105-115.

doi:10.1186/1742-6405-7-42

Cite this article as: Heeregrave et al.: Varied sensitivity to therapy of HIV-1 strains in CD4⁺ lymphocyte sub-populations upon ART initiation. *AIDS Research and Therapy* 2010 **7**:42.